

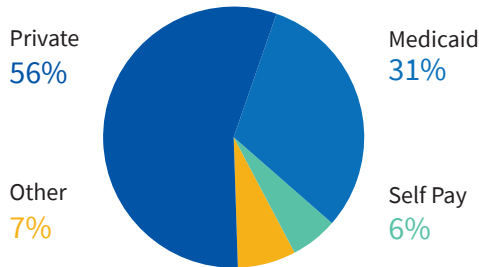
# Maternal Health Statistics and Policies

## VIRGINIA FACT SHEET

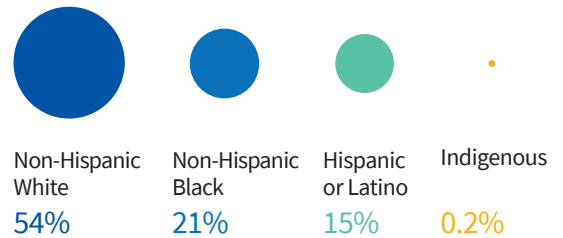


**97,429**  
births<sup>1</sup> each year

### Births by insurance type<sup>1</sup>



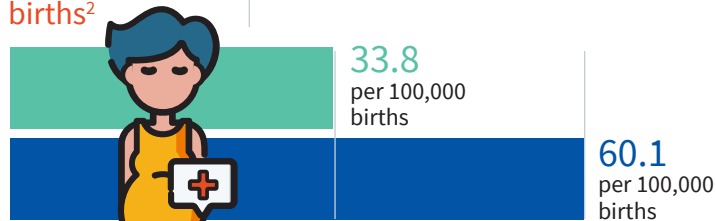
### Births by race-ethnicity<sup>1</sup>



## Maternal mortality

### Maternal mortality ratio 2019

**33**  
per 100,000 births<sup>2</sup>

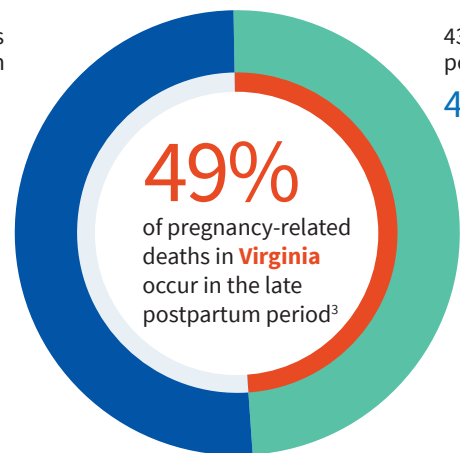


Black people in Virginia are **1.8x more likely** to die from pregnancy-associated causes compared to white people<sup>3</sup>

■ White people ■ Black people

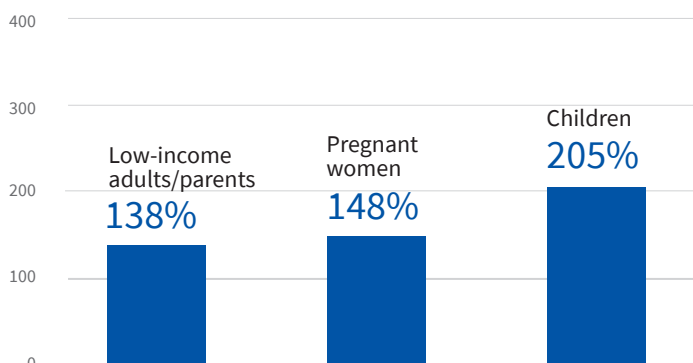
0 to 42 days postpartum  
**51%**

43+ days postpartum  
**49%**



### Virginia Medicaid income eligibility thresholds<sup>4</sup>

% of Federal Poverty Level



### Key Medicaid policies and other initiatives adopted by Virginia to promote maternal-child health

ACA Medicaid expansion<sup>4</sup>

**Adopted**

Medicaid unborn child option<sup>5</sup>

**Not adopted**

State maternal mortality review committee<sup>6</sup>

**Active**

State perinatal quality collaborative<sup>7</sup>

**Active**

**31.4%**

Postpartum uninsurance rate for Medicaid births<sup>8</sup>